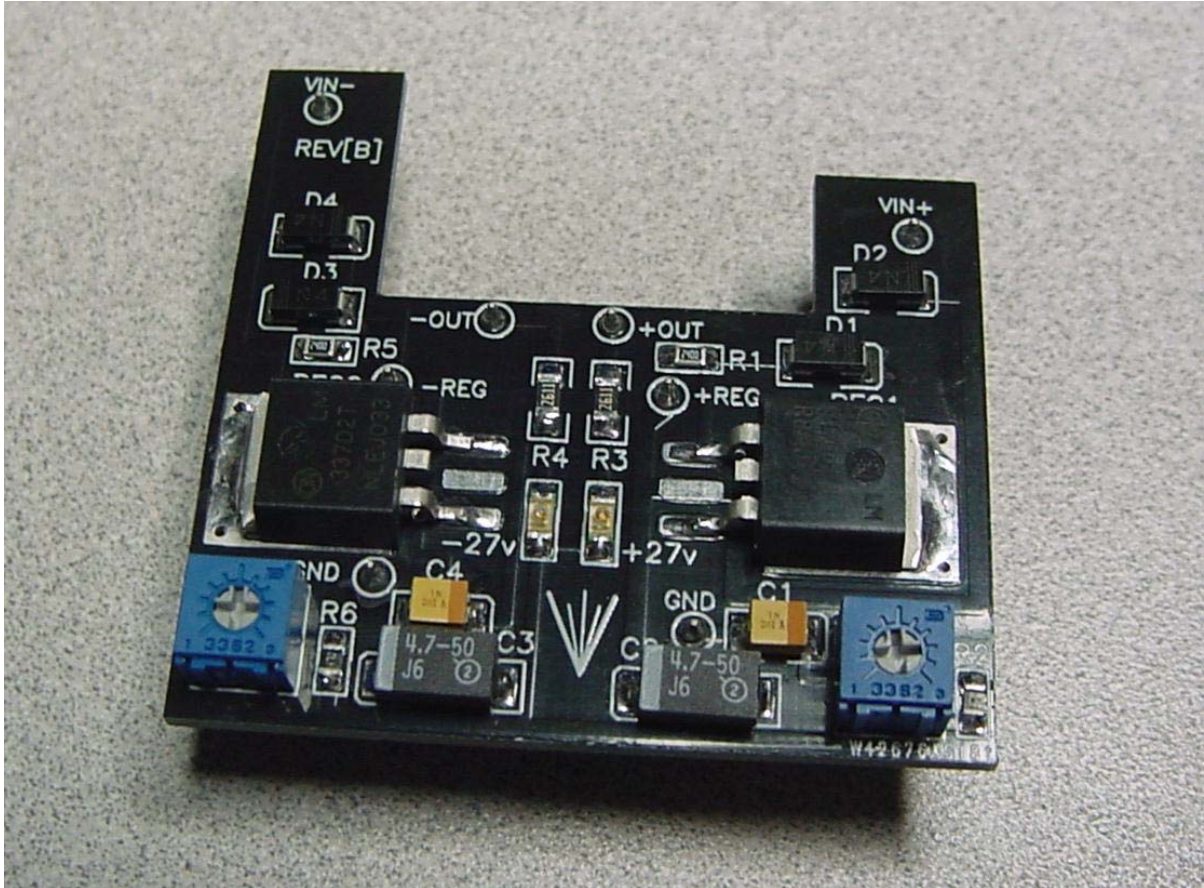
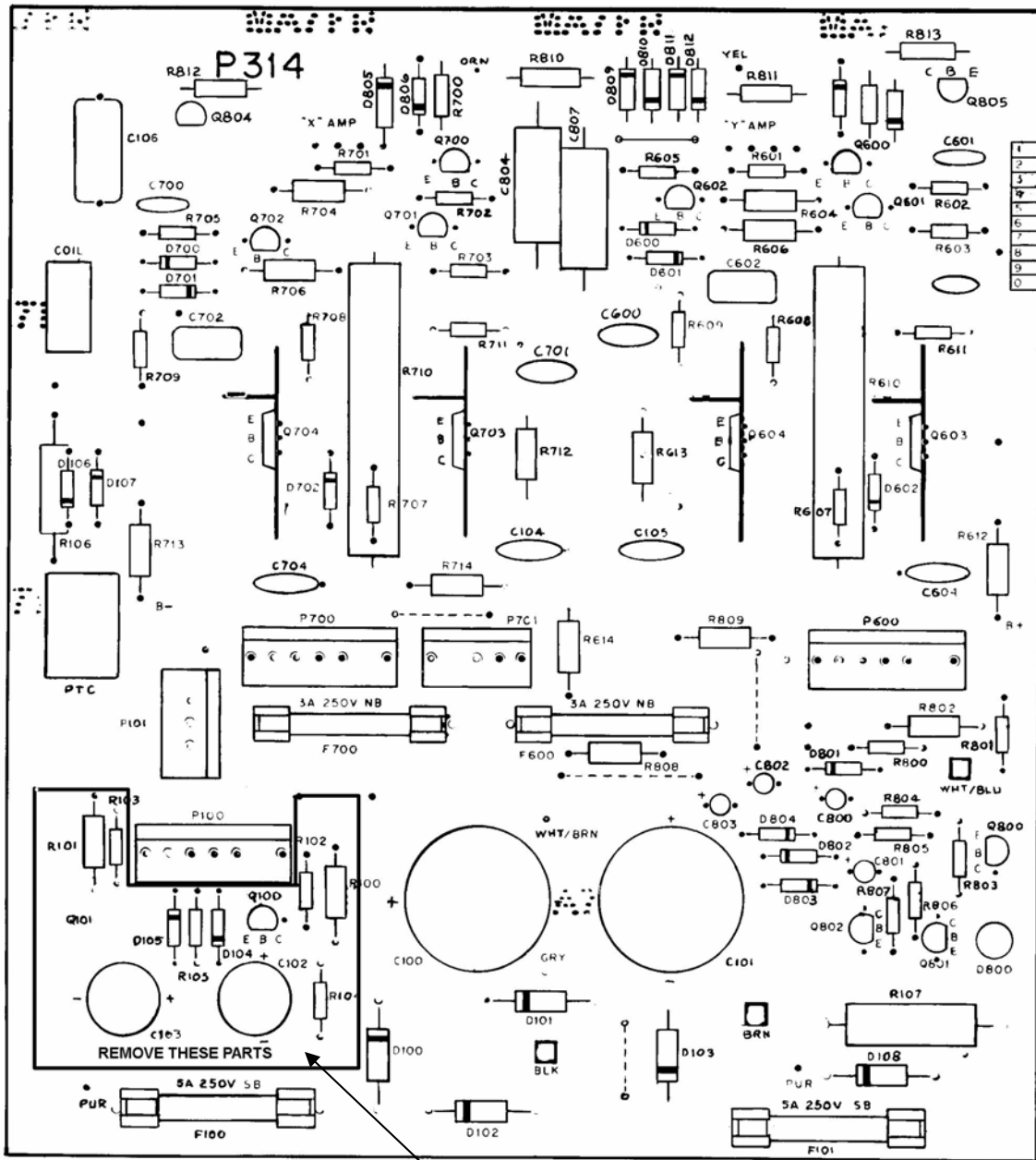


6100 Low Voltage Regulator INSTALL GUIDE

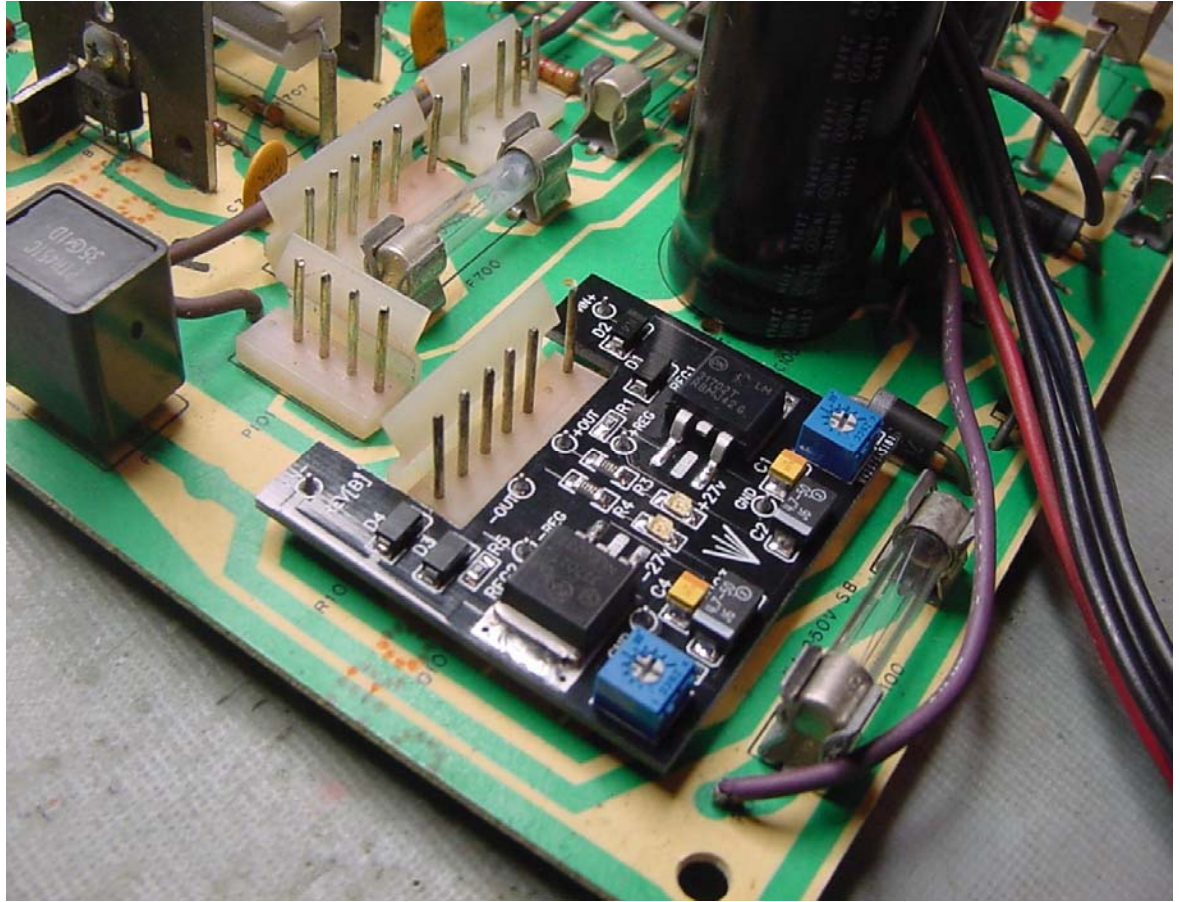


Each 6100 LV Regulator kit includes the following items:

1. 6100 LV Regulator PWB



Remove the components in this area only.
 Use desoldering gun or solder wick to remove solder from all holes.



Insert PWB into deflection board as shown. Flip deflection board over and solder all pins. Board is factory adjusted but you can trim the voltages with the on board pots. There are +27v and -27V green leds to indicate power.

IF YOU HAVE AND PROBLEMS OR SUGGESTIONS ON HOW TO IMPROVE THIS INSTALL GUIDE PLEASE CONTACT SUPPORT@VECTOR-LABS.COM